

**PARSEH**

**G R O U P**

# CONTENTS

Project Features	4
Site Location	7
Diagram	8
Elevation	10
Landscape	12
Ground Floor Plan	13
Type 1 Plan	15
Type 2 Plan	17

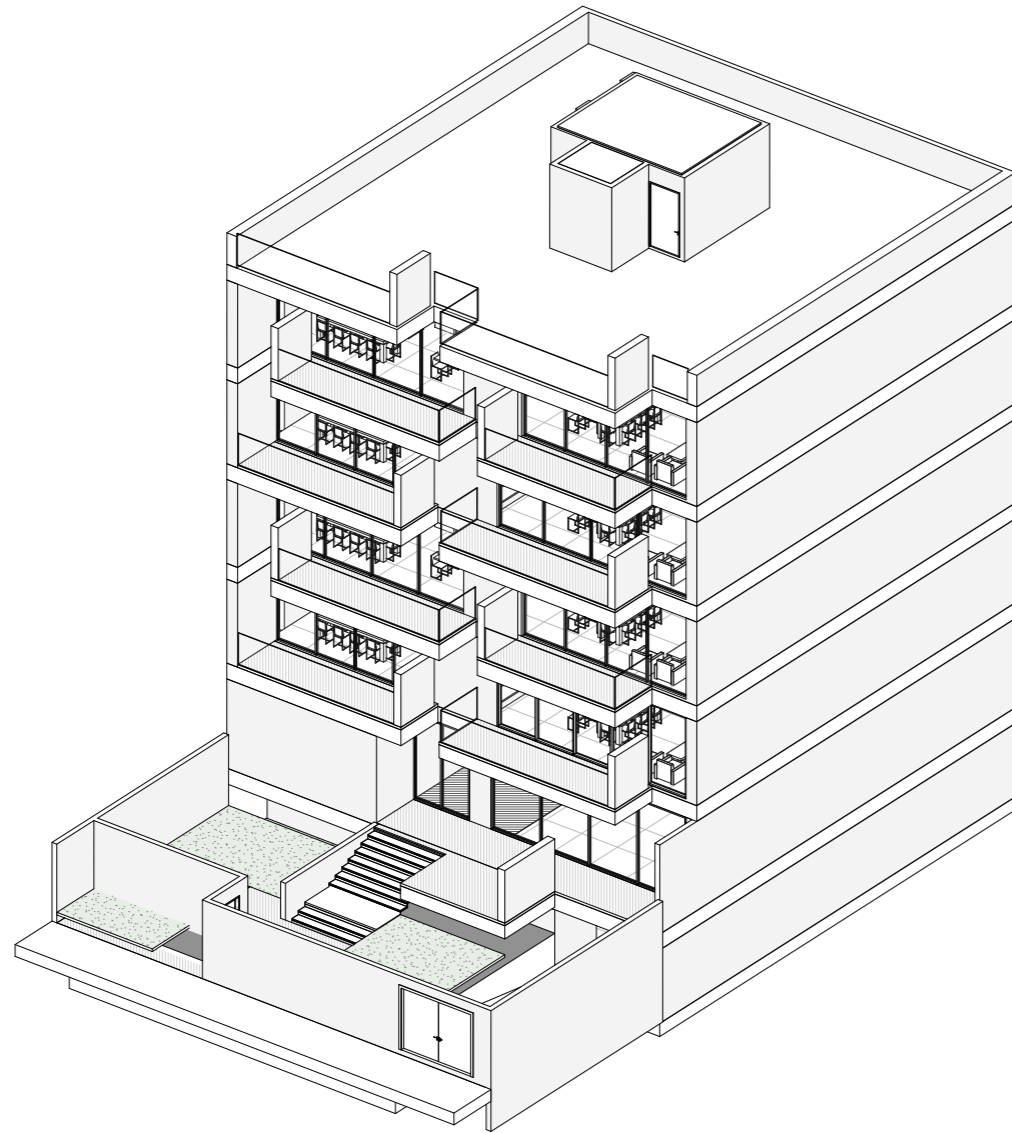
# NOJAN

---

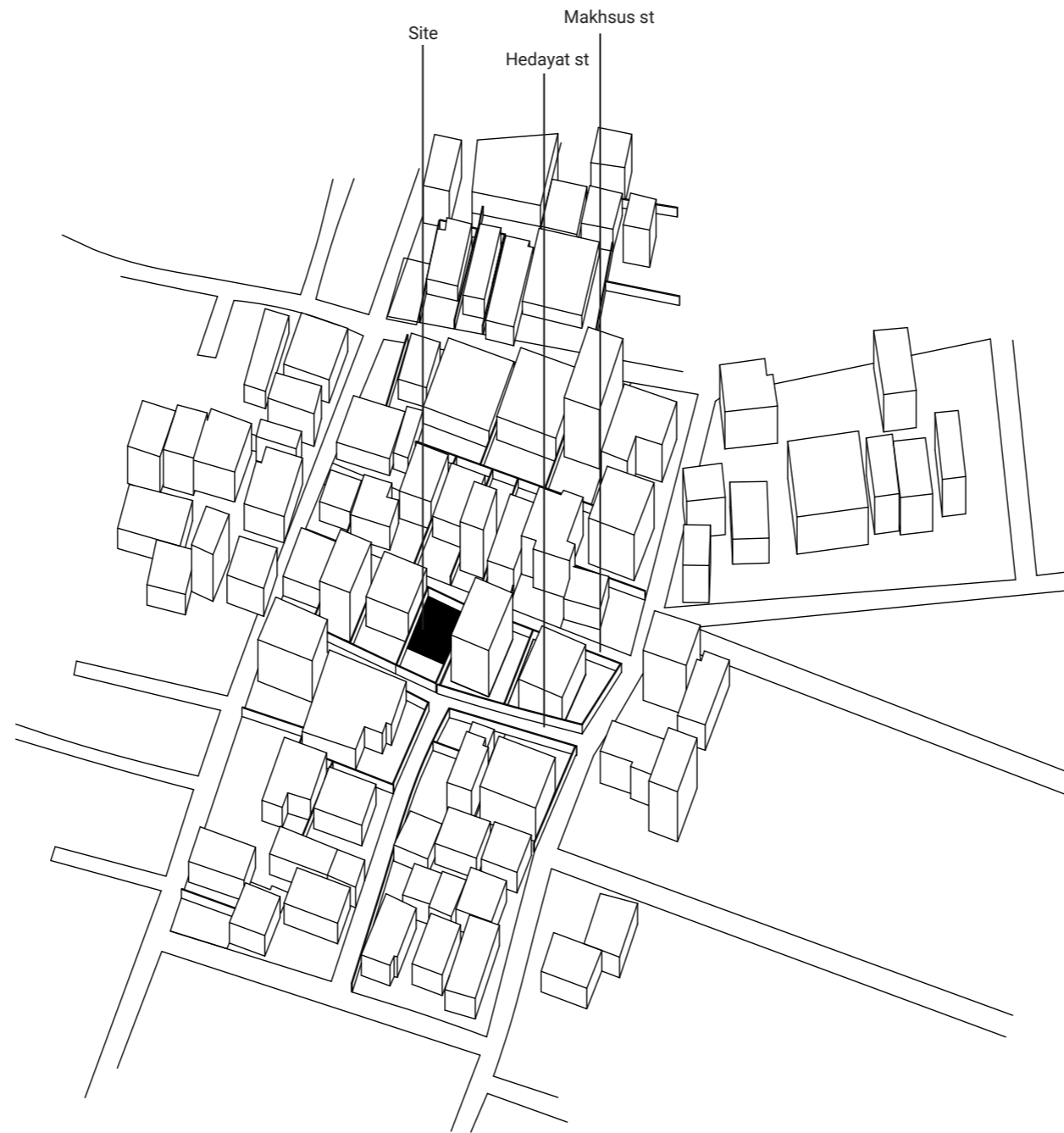
RESIDENTIAL APARTMENT

**Darrous, Tehran**  
**2023**





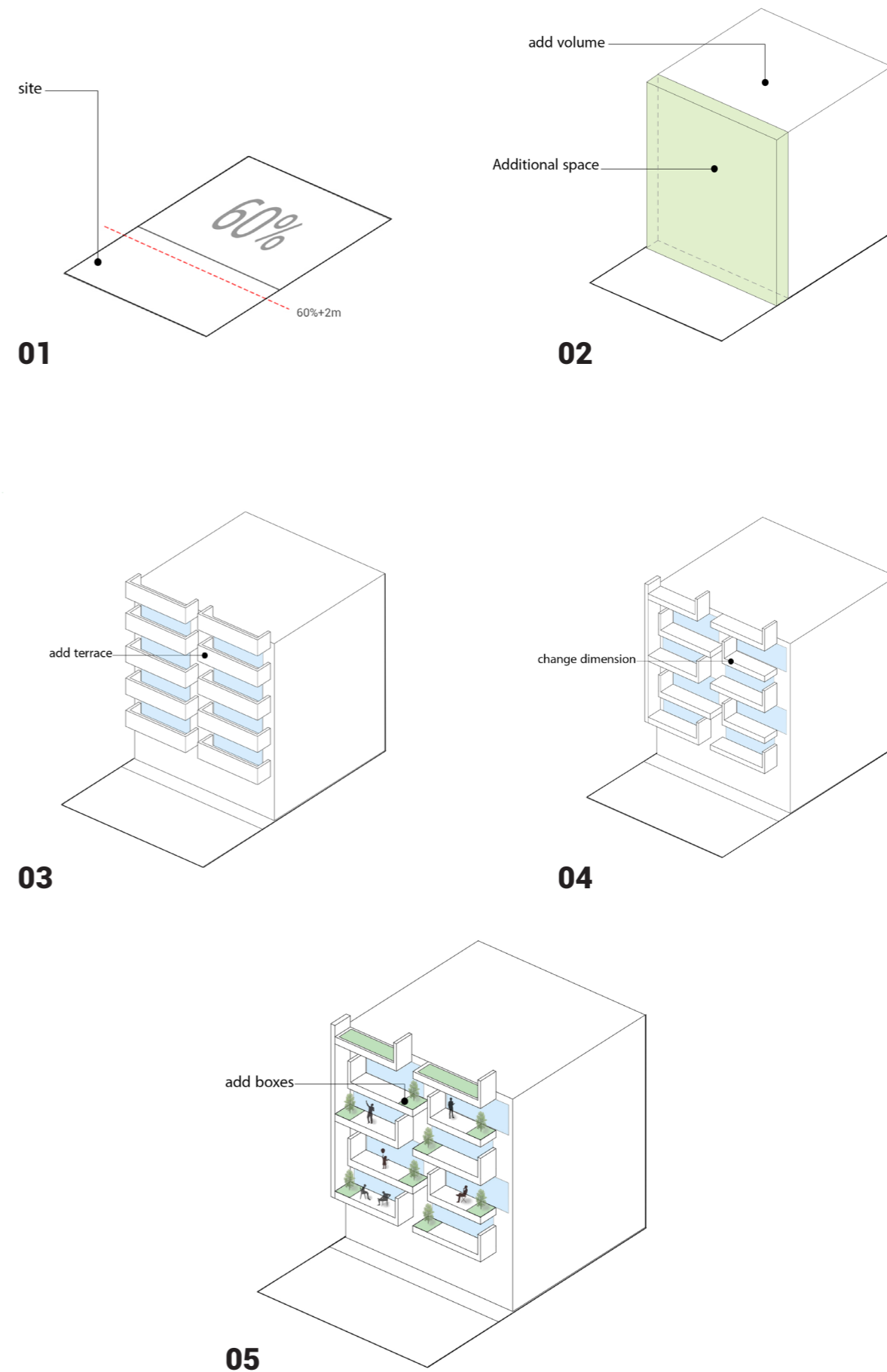
The project is located in Darous area and includes two facing and access from 6-meter alleys from north and south that is formed under the regulations of the region and municipality.



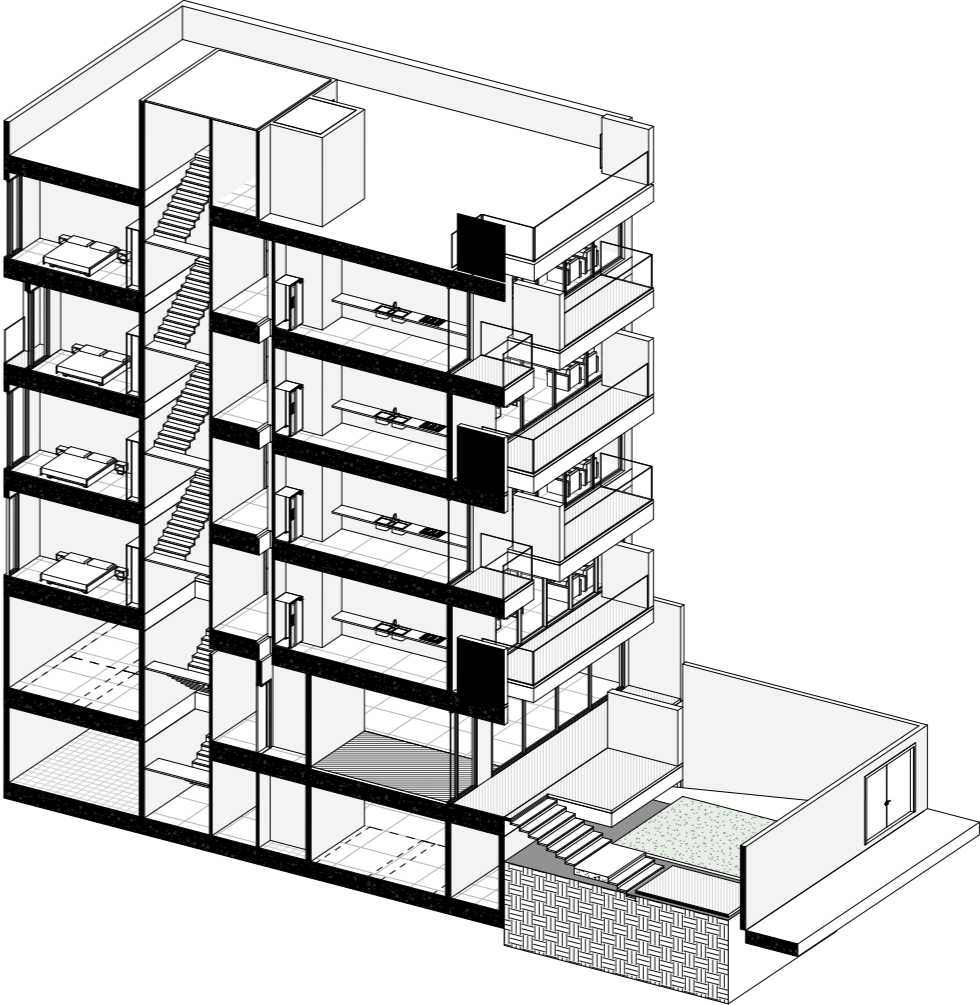
LOCATION PLAN

Although the project follows the rules of 60%+2 meters, but with However, we hope that with a special design of this project, we will have a significant impact on the texture of region or at least the surrounding environment. Of course, there are potentials: opening from the alley to the facade creates a very good view to the project, and the yard in front of building can be special.

# Diagram

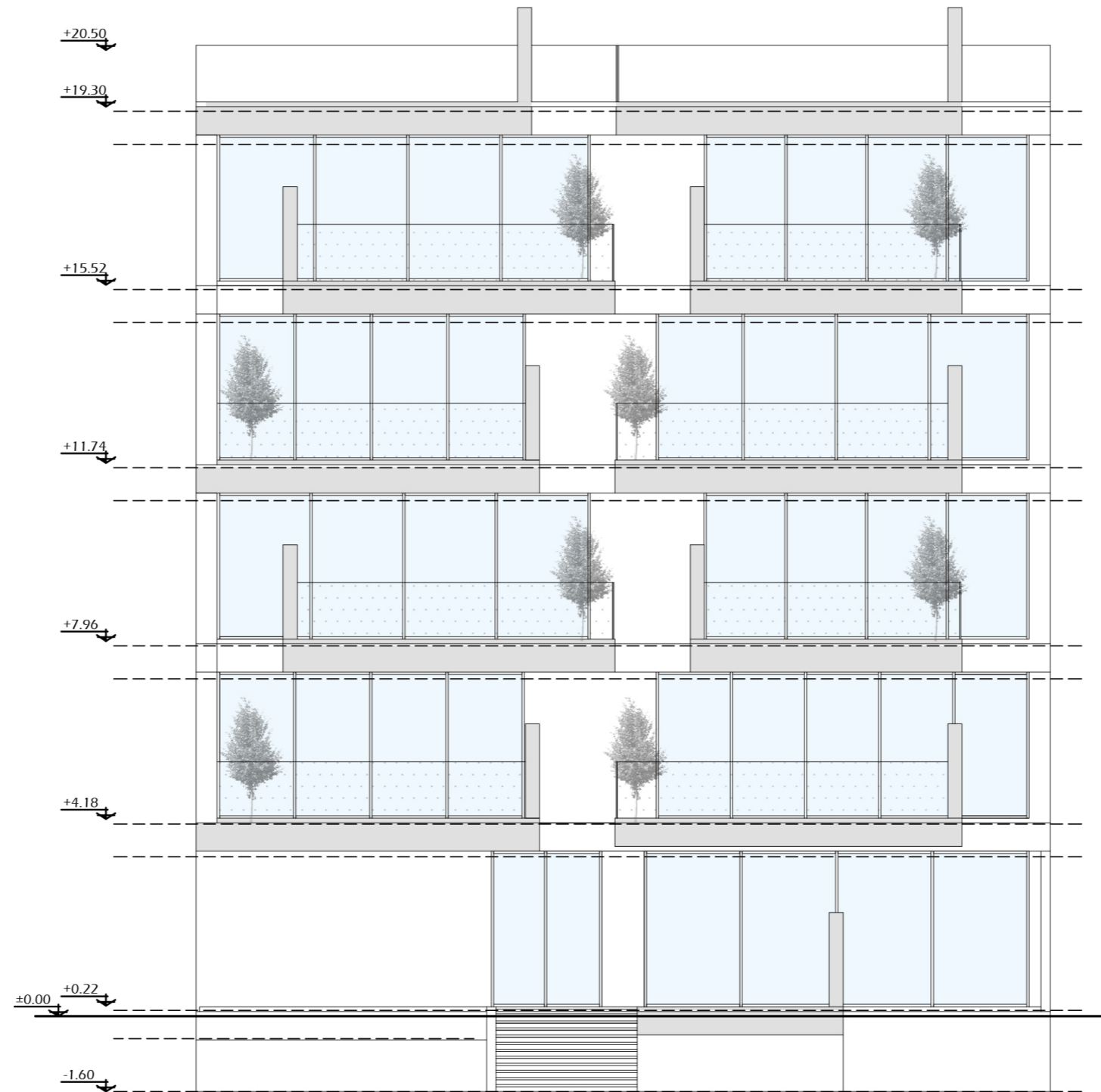


Due to the south-facing view and the stretching of the main interior spaces in this direction, the barrier between the inside and the outside has disappeared and the interior floor has freely extended to the outside. Therefore, the floors escape from the inner cage and fly out in the form of fluid and dancing terraces. The terraces of two adjacent units are the same but different from each other so as not to disturb each other's privacy. Also, this extension exists on the ground floor and penetrates the yard in the form of a terrace and strengthens the connection between the public space of the project and the yard. The same feeling exists in the yard. The floor of the yard also penetrates the public passage as a floor and on the other hand it penetrates into the basement floor with strain.





# Elevation

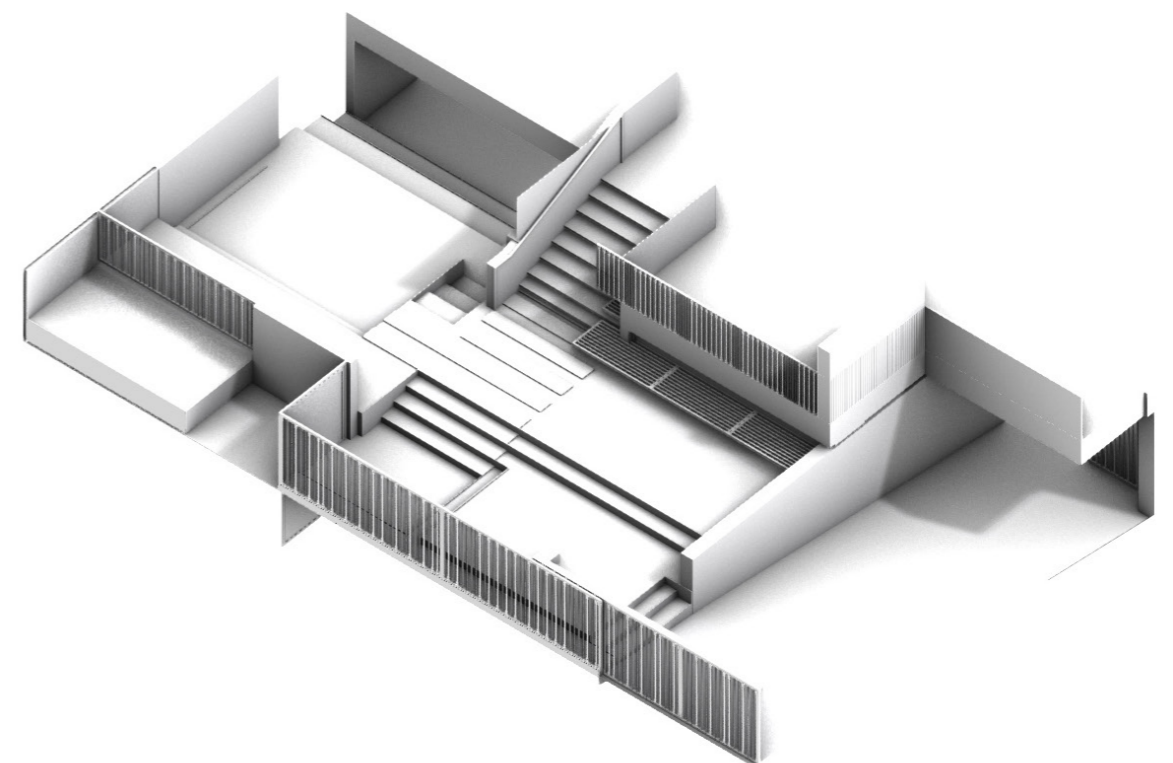




## Landscape



From a landscaping point of view, aiming to enhance it as a cohesive element that acts as a usable garden and scenery for the interior of the house.

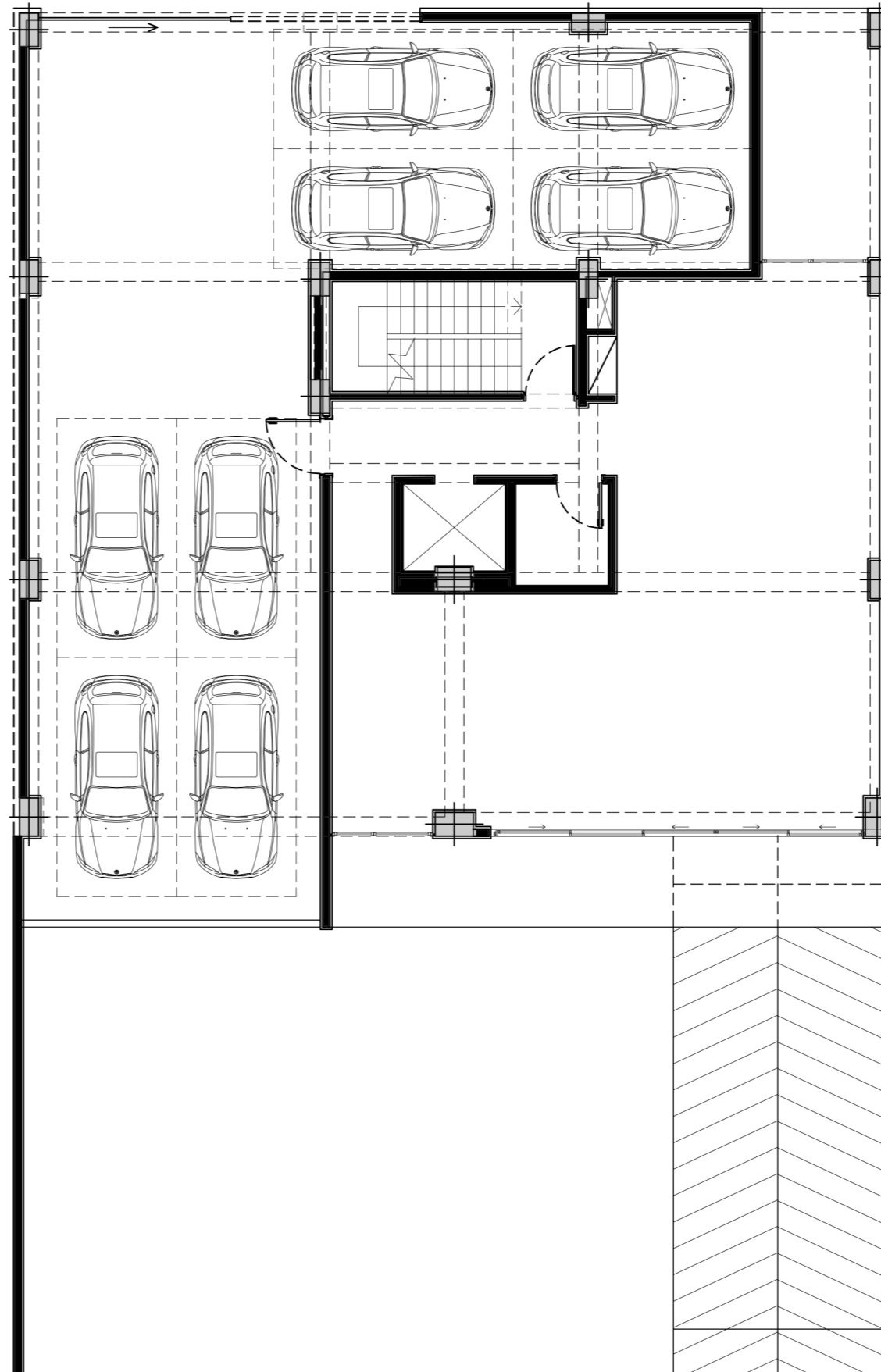






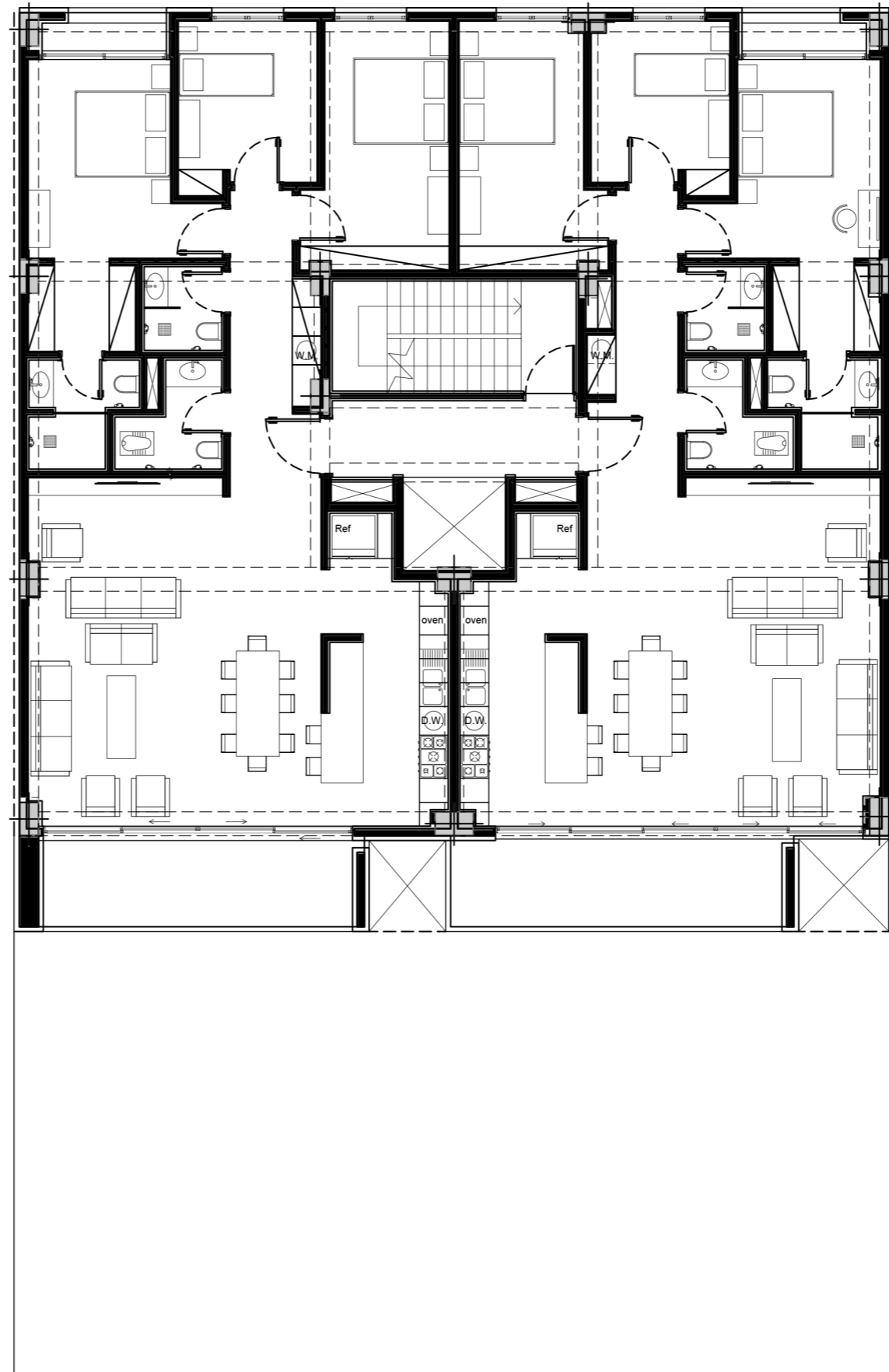
Lobby

# Ground floor PLAN





PLAN  
Type 1







Kitchen

# PLAN

Type 2

